



## WIRELESS RECORDING INTERFACE FOR INTAN RHD2132/16

The DSPW RCB-W24A-LVDS v2 Wi-Fi "Hat" is a low-cost, battery powered, 2.4GHz Wi-Fi interface for Intan Technologies RHD2132/16 headstage boards.

Useful for untethered, awake, behaving recordings of Action and Field potentials, ECoG, EKG, EMG.

### Contact DSPW for pre-release availability

Limited number of units available for pre-order. Includes Open Ephys GUI plugin for configuration, control, waveform display, and recording.

### RCB-W24A-LVDS v2 Module Features:

- 2.4GHz 802.11n IoT Wi-Fi interface
- Differential SPI LVDS Intan RHD interface
- 12 Pin Omnetics nano LVDS connector
- Module footprint - 1.4" x 1.1" x 0.63"
- Weight with 200mAh battery - 13.7g.
- Head mountable for Rat or larger
- Rechargeable battery - DSPW battery charger
- Approx. 1hr recording with included battery
- Onboard PCB trace or external Antenna option
- Browser interface for Wi-Fi SSID configuration
- Open network API- TCP control- UDP data stream

### Display and Recording Software included:

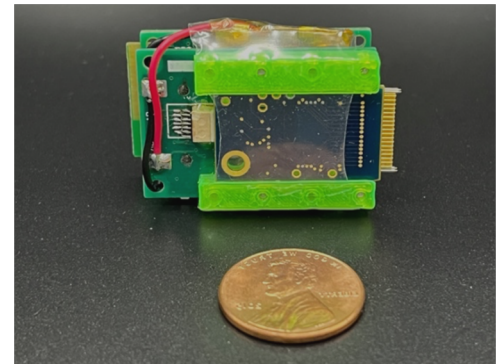
- Open Source Open Ephys GUI plugin
- Easy to use IP address configuration and control
- Waveform display and recording to disk
- Real time battery voltage indicator
- Wi-Fi packet and Intan RHD health indicators
- HTTP Post TTL Event trigger mechanism
- Capture 32 RHD channels plus 3 aux channels.
- Windows 10/11 and MacOS available Q4 2024

### RCB-W24A-LVDS provides easy interface to:

- 32 RHD2132 channels at 20ksps, 16 bits
- 16 RHD2132 channels at 30ksps, 16 bits
- 16 RHD2116 channels at 30ksps, 16 bits

Various other wireless designs are in development. Contact DSPW to get your requirements into the mix.

Check out [www.dspw.io](http://www.dspw.io) for more info!



\*Intan RHD2000 headstage not included.

DSPW acknowledges support from:

